

DSP. *ProDGnet*

Remote processing, control and management are carried out through ***ProDGnet*** software.



ProDGnet software allows an instantaneous and intuitive view of the status of all systems, as well as absolute control of the different parameters individually (unit by unit).

To operate with *ProDGnet* software from your PC you will only need:

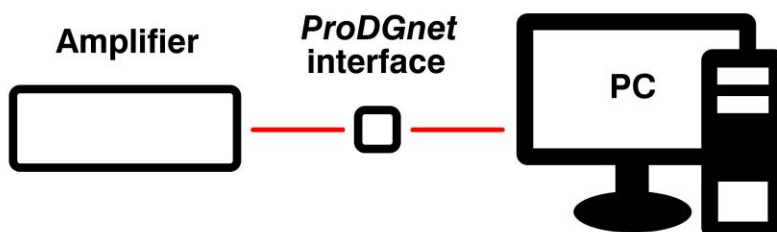
- Download ProDGnet software at Pro DG Systems website (section “Support” > “Software”): <https://prodgsystems.com/19-scrpt-software.html>

Easy to download, all the necessary drivers for installation are included.

Important: the software is currently available for any version of Windows (32 and 64 bits).

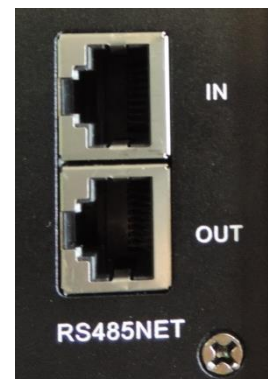
- Acquire *ProDGnet* interface (optional), to connect the DSP module housed in the amplifier with your PC. To purchase *ProDGnet* interface contact us at: info@prodgsystems.com or consult your authorized Pro DG Systems distributor.

ProDGnet interface

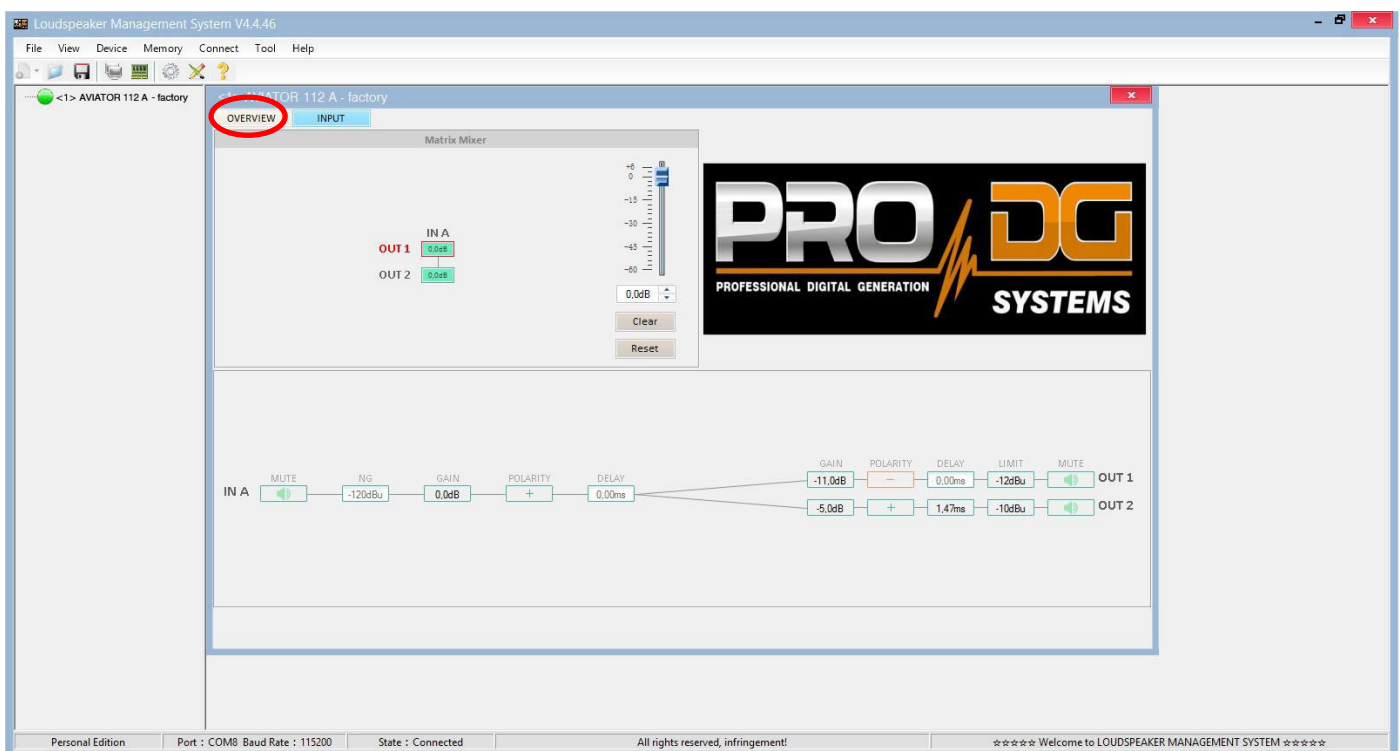


Below is a **guide for use** and information on the different menus of the *ProDGnet* software, which we can see **when we connect the DSP module of the unit to the PC**, through the ProDGnet interface:

Once the software is downloaded on your PC; create your network of Pro DG Systems systems, to do this connect the Ethernet cabling to the different units;

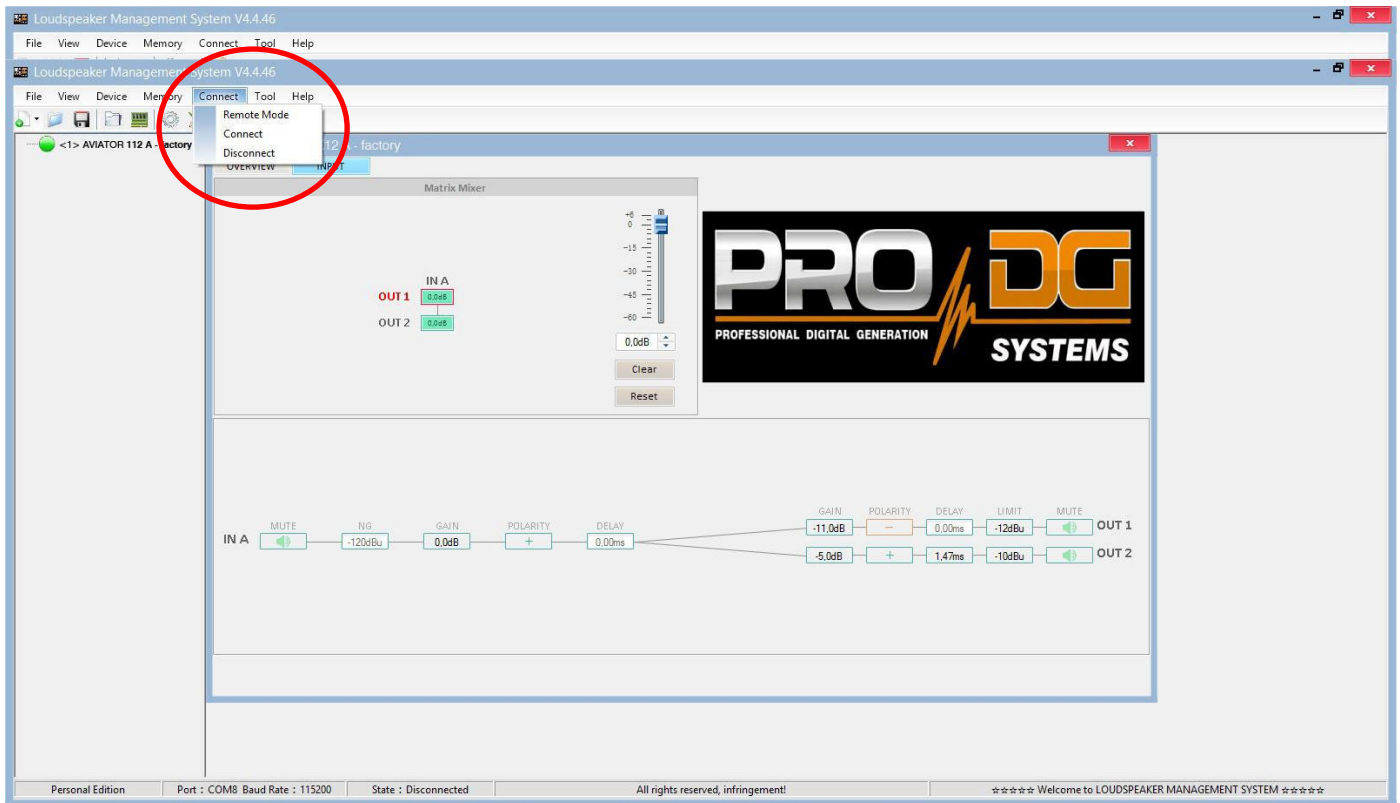


When you start the software, the **general menu** will be displayed by default. (OVERVIEW);



This menu allows modifying different options on input A and outputs 1 and 2, such as: Mute, Limiter, Gain, Polarity and Delay.

When clicking “**Connect**” > “**Remote mode**”, in the top bar;

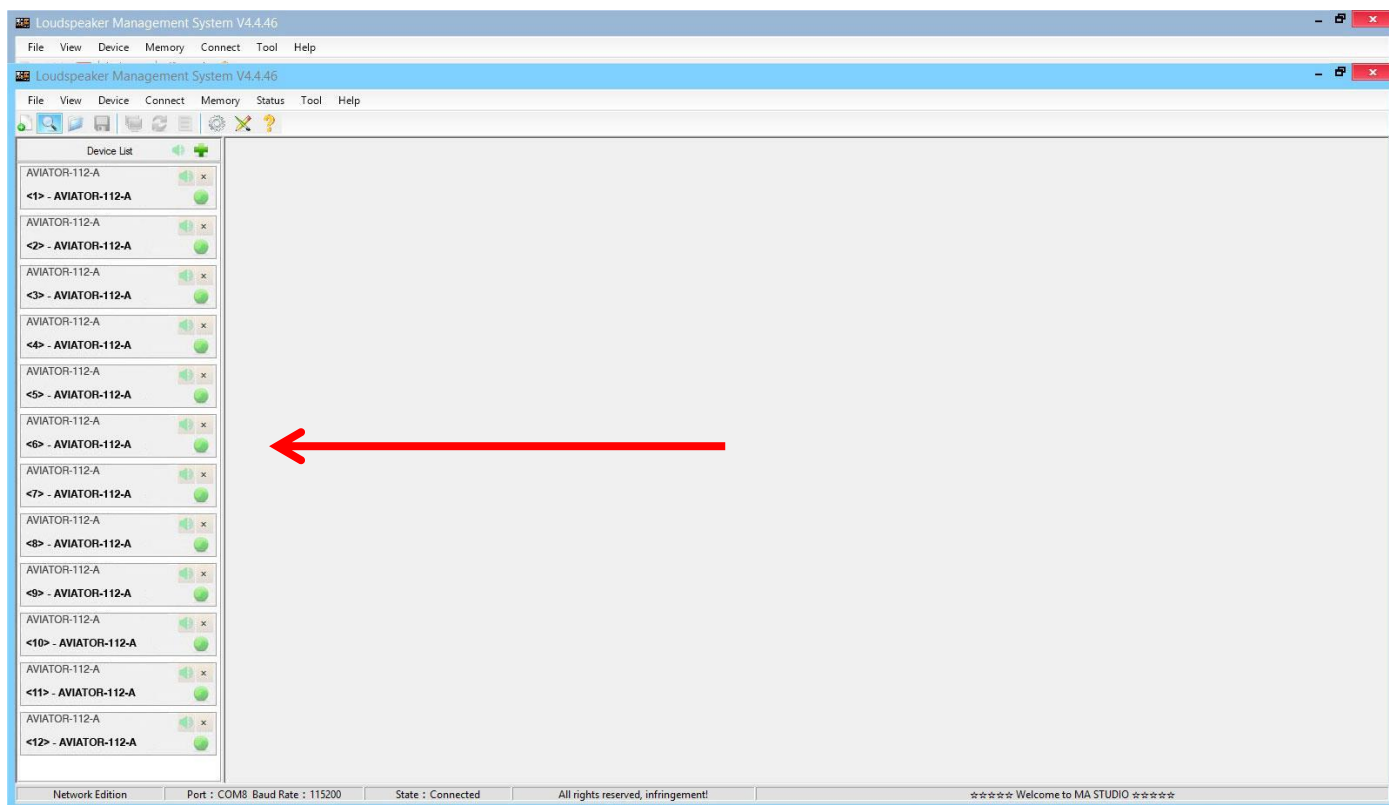


The following dialog box will appear;

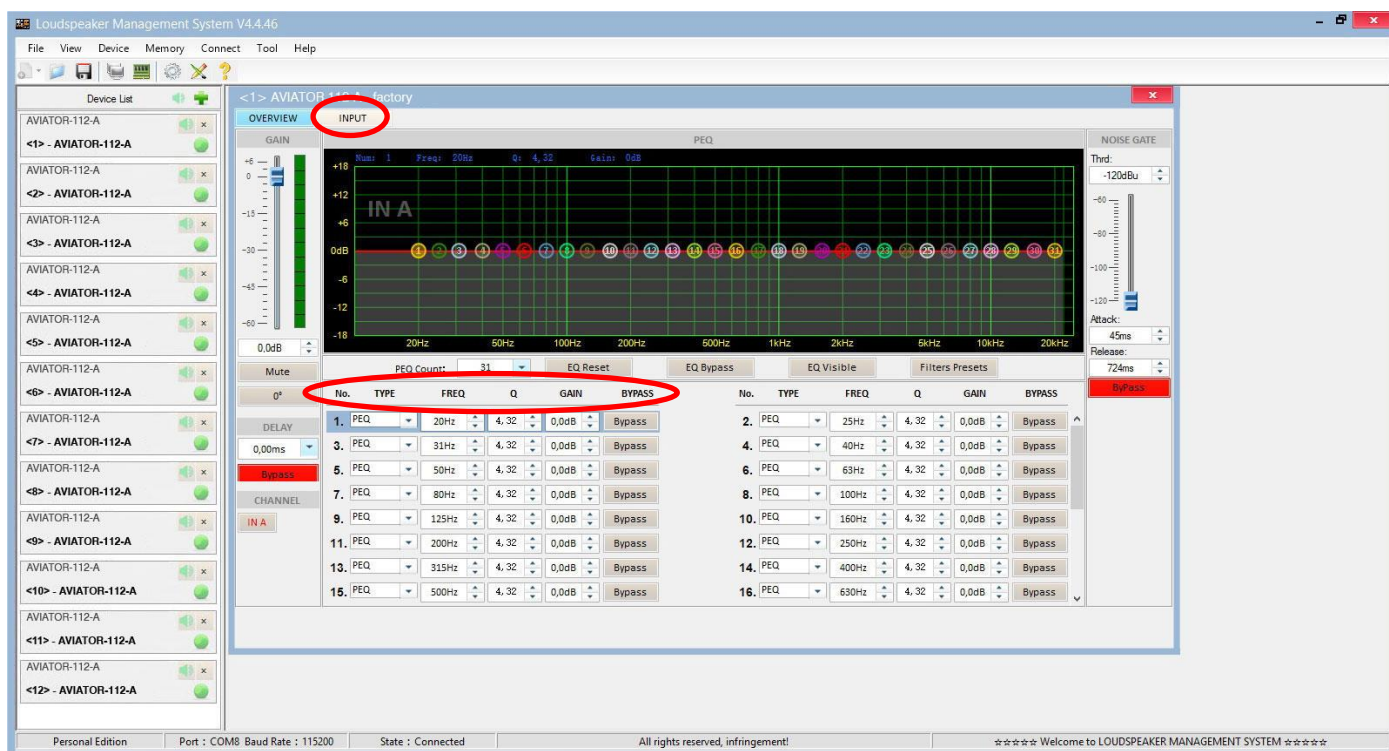
Allowing connection to the DSP module of each unit connected to the Ethernet network.



After pressing “OK” all connected units will be displayed (in green) to the left of the menu;

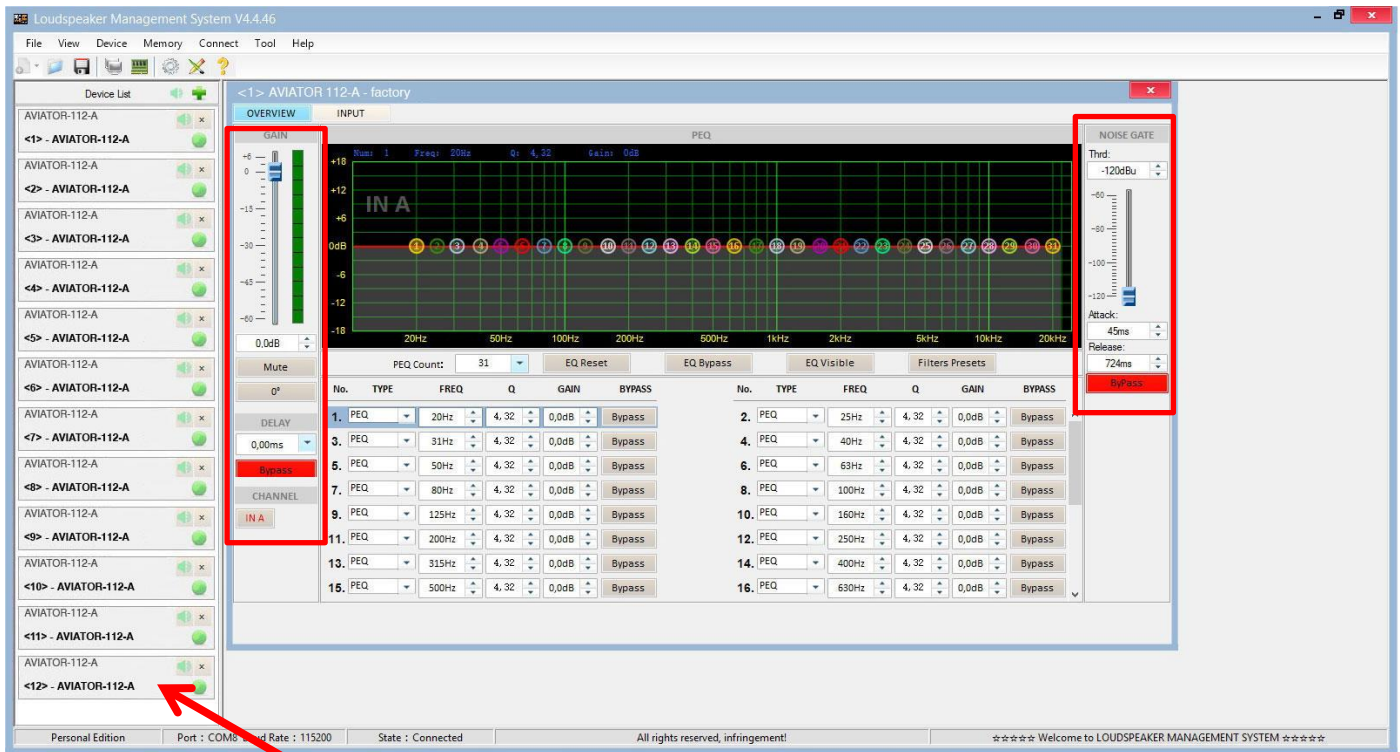


By clicking on the **INPUT** menu, a 31-band parametric equalizer is displayed, allowing you to select the type of Filter, Frequency, Bandwidth (Q), Gain and Bypass;



On the left of the menu, you can manually modify Gain, Mute, Delay, Bypass and input channel selection.

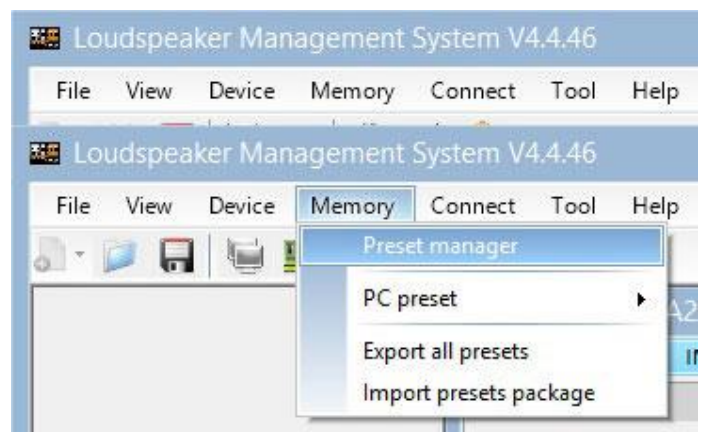
To the right of the menu is a noise gate where we find Threshold, Attack, Release and a Bypass of the input noise gate.



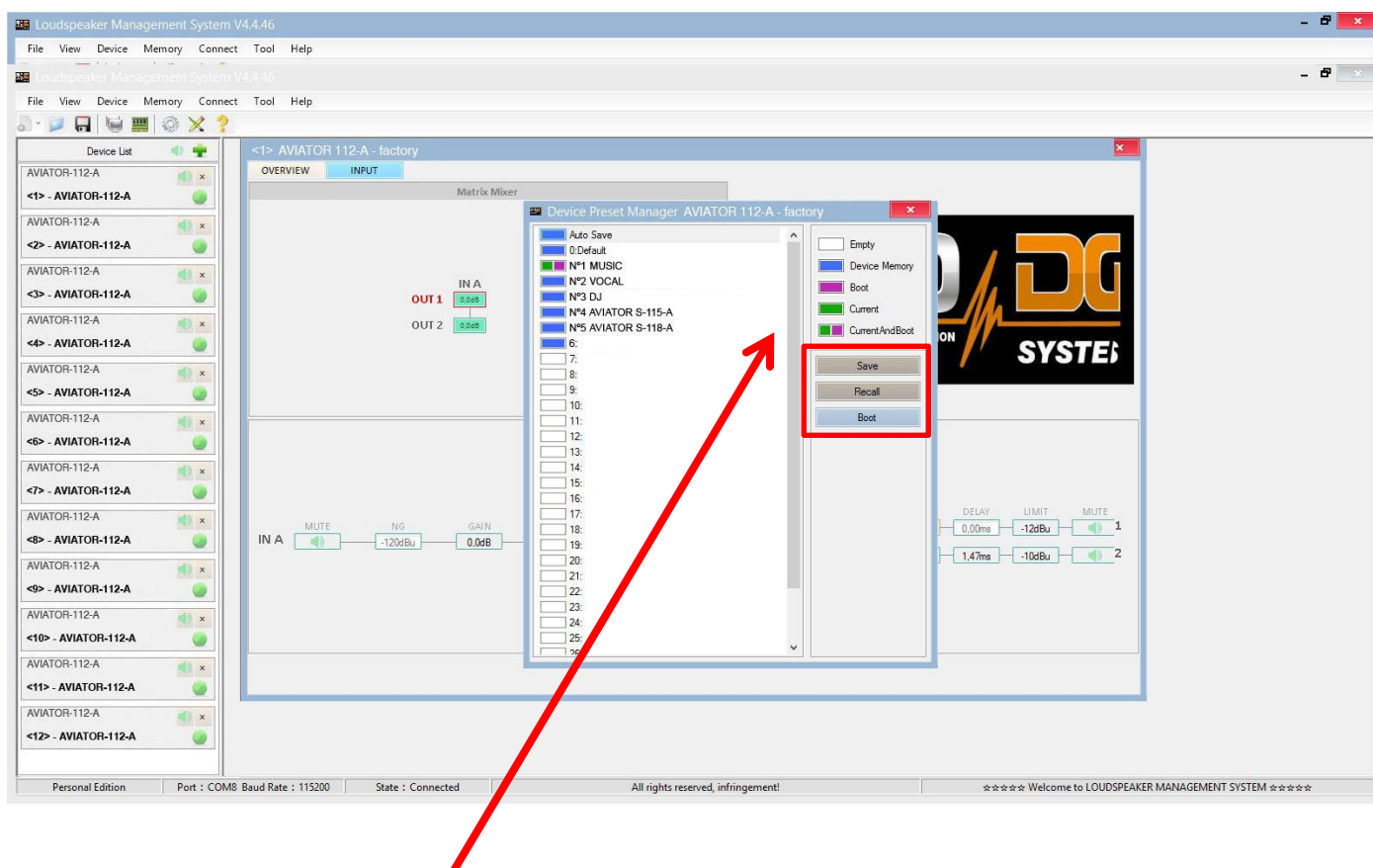
To apply changes to any of the units connected to the ProDGnet network, simply click on the desired unit.

To select factory stored presets, it will be necessary to click “**Memory**” > “**Preset manager**”.

The unit has 5 factory presets.



Then, the factory stored preset selection menu will be displayed;



The meaning of the colors shown next to each preset is as follows:

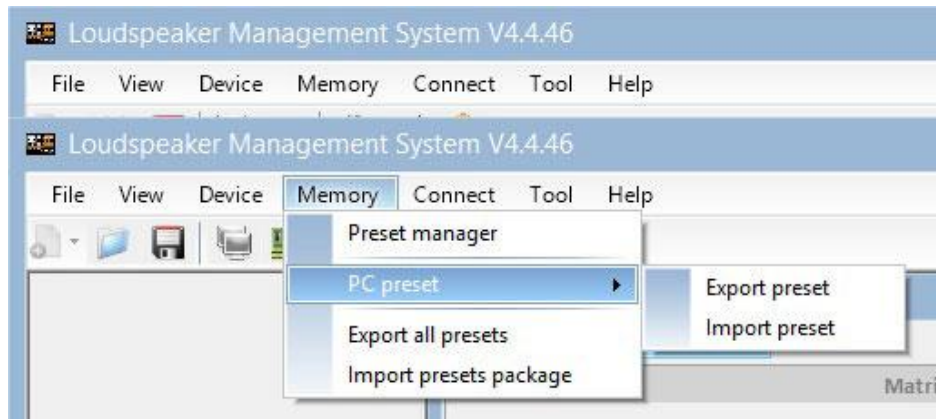
- ☐ Empty Preset.
- ☒ Preset stored in memory.
- ☒ Preset that we want to appear by default when turning on the unit.
- ☒ Currently selected preset.
- ☒ Preset currently selected and that will appear by default when turning on the unit.

“Save” allows saving changes made to the selected preset.

“Recall” allows reloading a stored preset.

“Boot” allows setting the selected preset as the desired preset that will appear by default when turning on the unit.

To Import or Export presets individually (preset by preset), from PC to amplifier unit or vice versa, it will necessary to click “Memory” > “PC preset”.

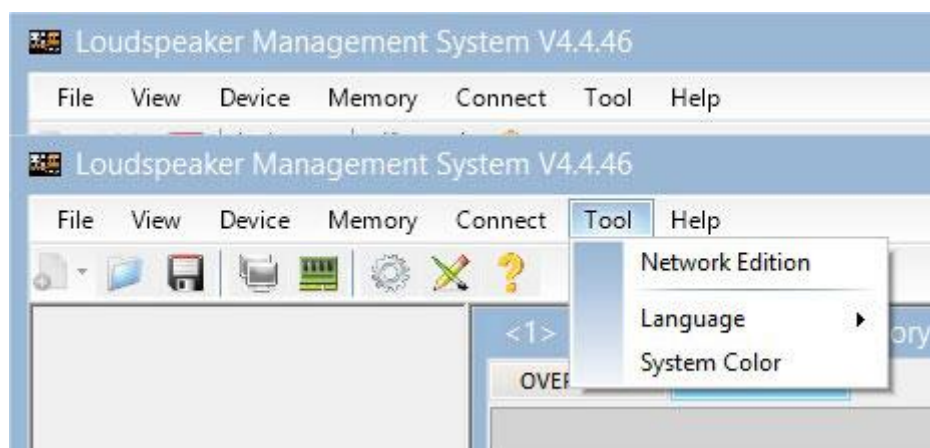


The “Export all presets” tab allows **exporting all the presets stored on the PC to the unit.**

The “Import presets package” tab allows **importing all the presets stored on the unit to the PC.**

To change the language, click “Tool” > “Language”.

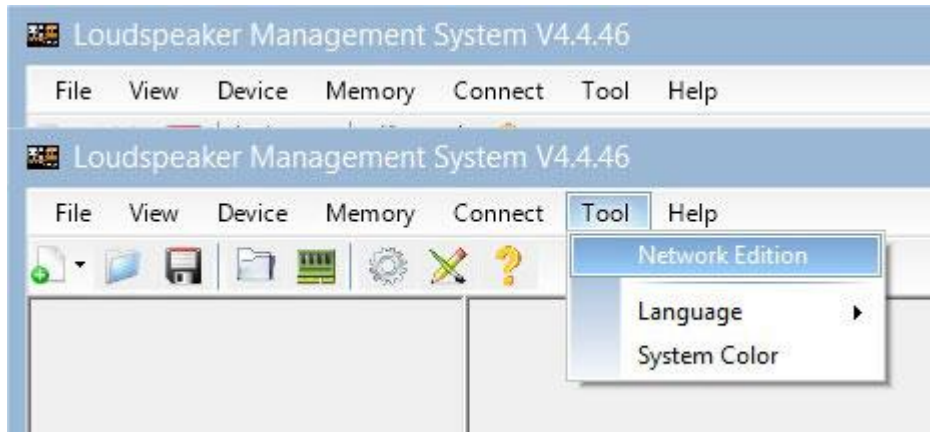
If you want to **change the menu color**, click “Tools” > “System Color”.



By having a network of systems connected to each other through Ethernet cabling and RS485 protocol, you have the possibility of **creating a group of systems**, which allows any change or equalization made to be applied to all the units that are part of the same network.

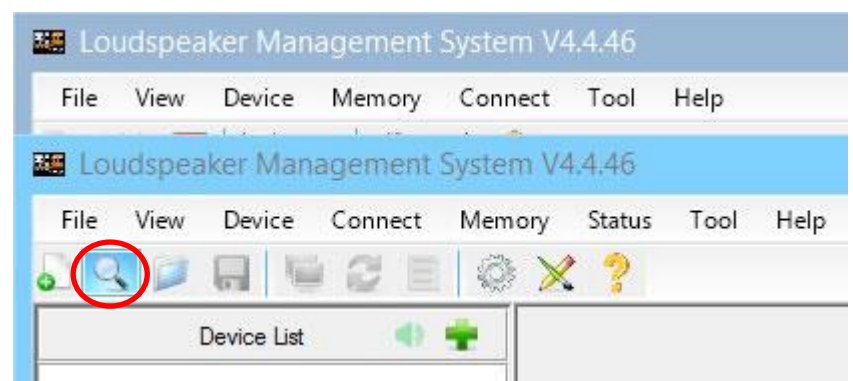
For example, if we have twelve units AVIATOR 112 A, when creating a group made up of these units, any change or equalization made will be applied to all units;

Device List	
AVIATOR-112-A	x
<1> - AVIATOR-112-A	
AVIATOR-112-A	x
<2> - AVIATOR-112-A	
AVIATOR-112-A	x
<3> - AVIATOR-112-A	
AVIATOR-112-A	x
<4> - AVIATOR-112-A	
AVIATOR-112-A	x
<5> - AVIATOR-112-A	
AVIATOR-112-A	x
<6> - AVIATOR-112-A	
AVIATOR-112-A	x
<7> - AVIATOR-112-A	
AVIATOR-112-A	x
<8> - AVIATOR-112-A	
AVIATOR-112-A	x
<9> - AVIATOR-112-A	
AVIATOR-112-A	x
<10> - AVIATOR-112-A	
AVIATOR-112-A	x
<11> - AVIATOR-112-A	
AVIATOR-112-A	x
<12> - AVIATOR-112-A	



To create a system group, click “Tool” > “Network Edition”

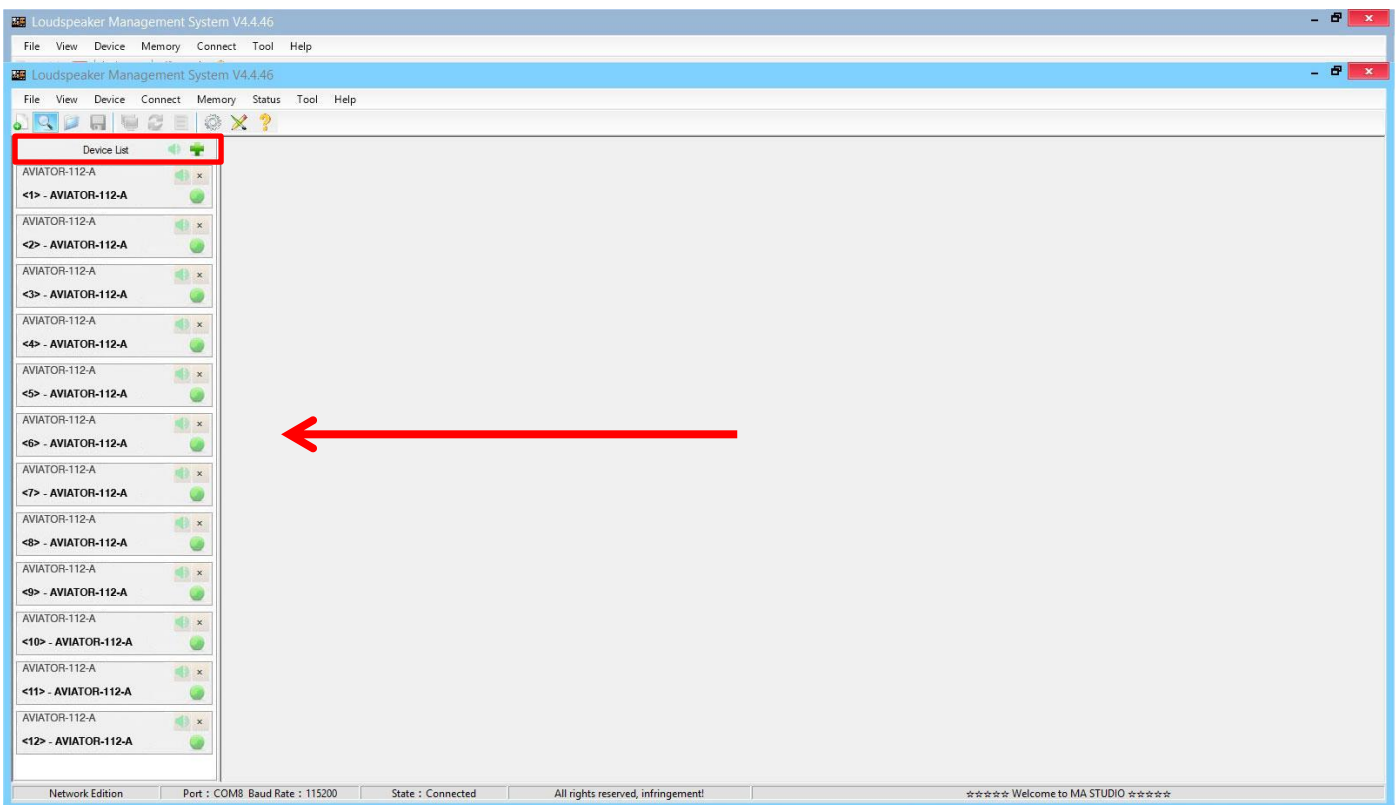
Then click on the **magnifying glass** icon;



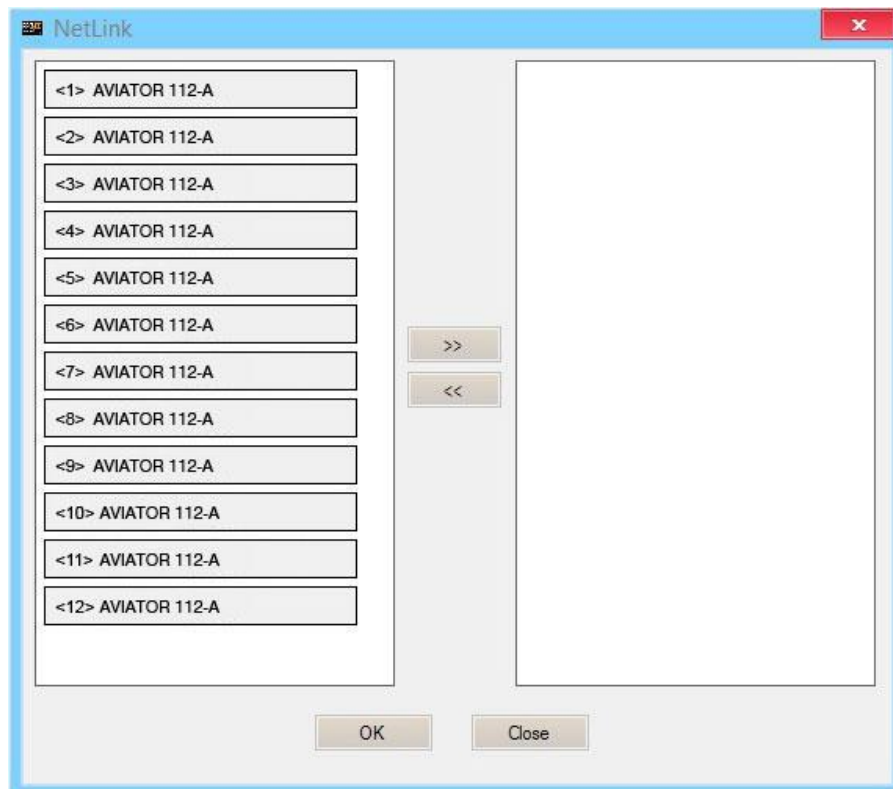
The following dialog box will appear. Click “**OK**” button”.



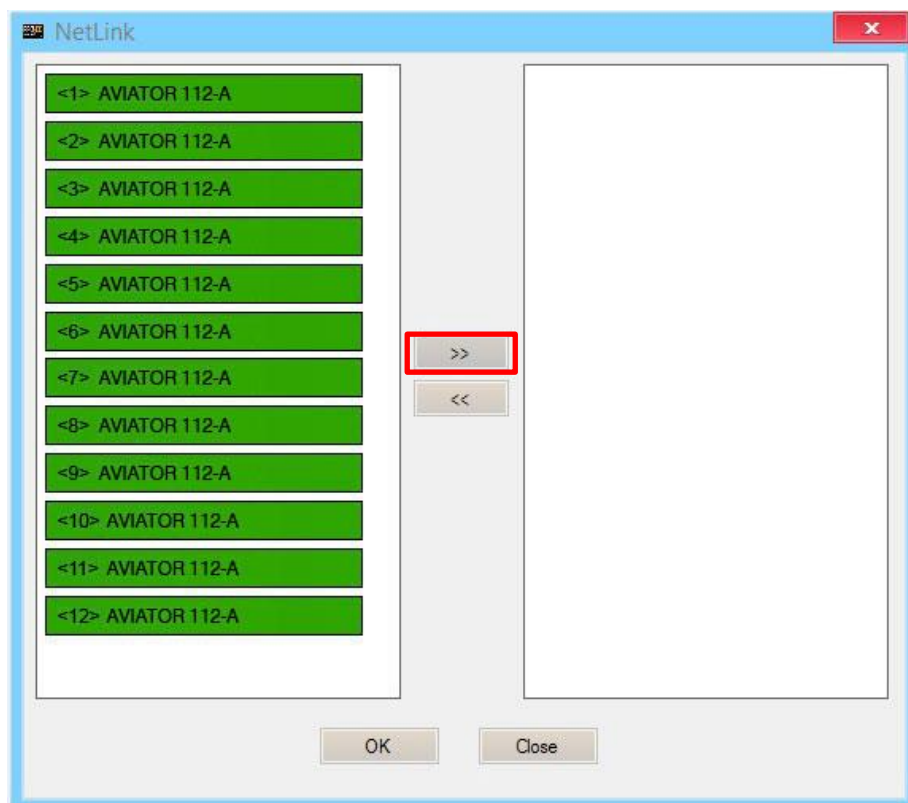
Once the previous step has been completed, all the units connected to the network will be displayed on the left of the menu (the group has not been created yet). Then click “**Device List**” button”.



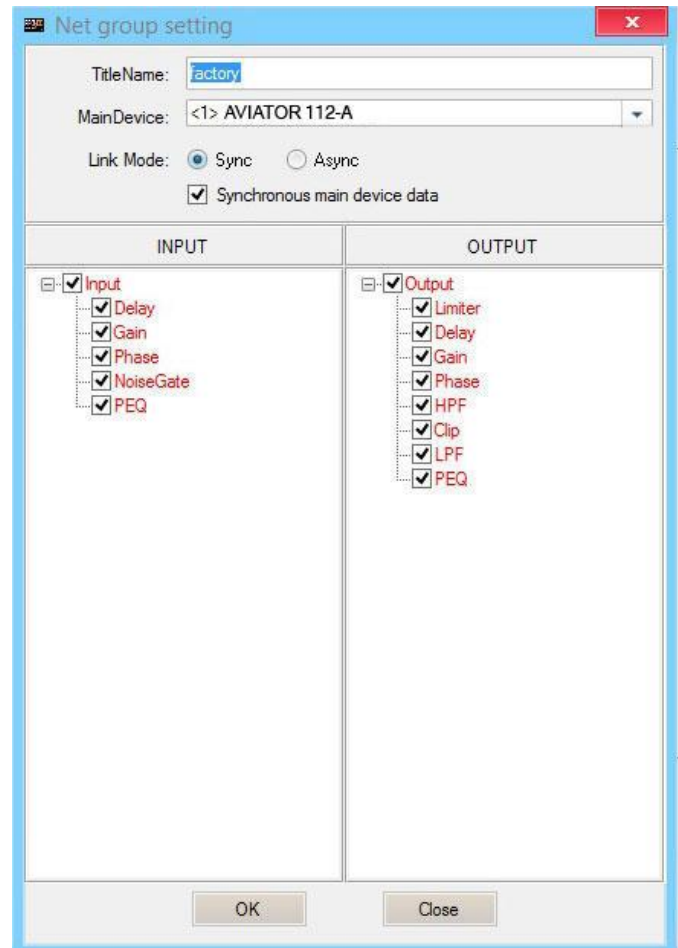
The following dialog box will appear;



Next, we will select all the units that will be part of the group and click on the right arrow icon, the units that are displayed in the box on the right are the ones that will be part of the same group;



We will press “**OK**” button, which will cause the following dialog box to appear, in which we can modify the name of the created group, as well as different parameters of it;



The 'Net group setting' dialog box is shown. It has a title bar with a close button. The 'TitleName' field is set to 'factory'. The 'MainDevice' dropdown is set to '<1> AVIATOR 112-A'. The 'Link Mode' has 'Sync' selected. The 'Synchronous main device data' checkbox is checked. The dialog is divided into two columns: 'INPUT' and 'OUTPUT'. Under 'INPUT', there is a tree view with 'Input' expanded, showing sub-items: Delay, Gain, Phase, NoiseGate, and PEQ, all of which are checked. Under 'OUTPUT', there is a tree view with 'Output' expanded, showing sub-items: Limiter, Delay, Gain, Phase, HPF, Clip, LPF, and PEQ, all of which are checked. At the bottom, there are 'OK' and 'Close' buttons.



By pressing “**OK**” button in the previous step, the group creation process will be completed. In the menu on the left we can see that all the selected units are already part of the same group.



If you have any technical problem or questions about Pro DG Systems products; contact our technical support department at: sat@prodgsystems.com